

Zipper installation using glue

This was created and prepared by Joyce Ragels jragels2005@yahoo.com

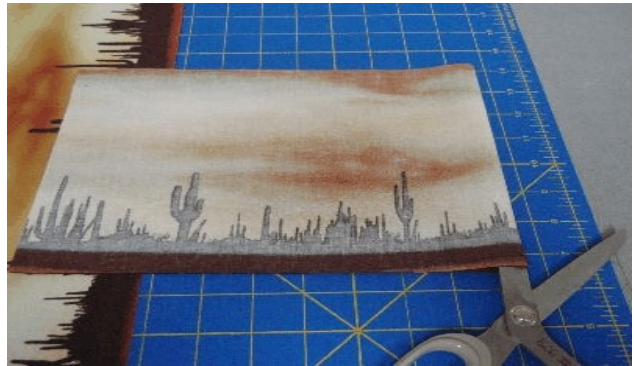
This is a tutorial for a small travel size bag and the installation of a zipper using glue.

For those who fear zippers. This is about as pain free as you can get.

This is the FQ I selected for the project.



I folded each section upon itself, carefully matching the ends, and cut each section in half approximately 10.5" by 7.5". This will give me two bags.



After squaring up and some trimming, I ended up with two matching pieces.



I will be using a metal zipper (on the top) and a polyester zipper (on the bottom). The polyester zipper is much easier to adjust or trim. For metal zippers, you sometimes have to use pliers to break the teeth apart.



Cut a piece of waxed paper slightly larger than the fabric. Place it face down in about the center of the waxed paper.



Gently pick up the glued fabric and place it on the zipper. NOTE that the fabric should extend almost .5" beyond the zipper stop. You can see the zipper stop on the left side. The stop should just barely show when the side seams are sewn. Position the fabric in a straight line along the zipper exposing as much as you'd like. Just make sure your stitches will fall on the zipper. You will be sewing very close to the edge. Do the other side.



First fold and press about .5" hem in your fabric. Then apply some ordinary white washable glue to the wrong side of the hem. It is best if you stay away from the edge where you will be sewing. You may find that your glue does not remain in a nice straight line and will sometimes almost shrink up and form little balls as the extreme right of the picture. That does not matter and you are not doing anything wrong. Just do whatever you have to do to get a fairly continuous string of glue from one end to the other.



Here you can see that I have done both sides of both bags. The only tricky part is to try not to move the zipper while you are placing the second fabric piece. Now you just leave them alone and let the glue dry.



After the glue is dry, I find it easier to peel the waxed paper off the fabric and zipper by turning it so the waxed paper is on top. Be gentle.



Stitch very close to the edge of the fabric.



Stitch both sides of the zipper.



Trim both ends of the zipper even with your fabric. CAUTION - It is rather important to slide the zipper tab well back BEFORE making that cut. If you have a pink edge blade for your rotary cutter, it will help to prevent raveling.



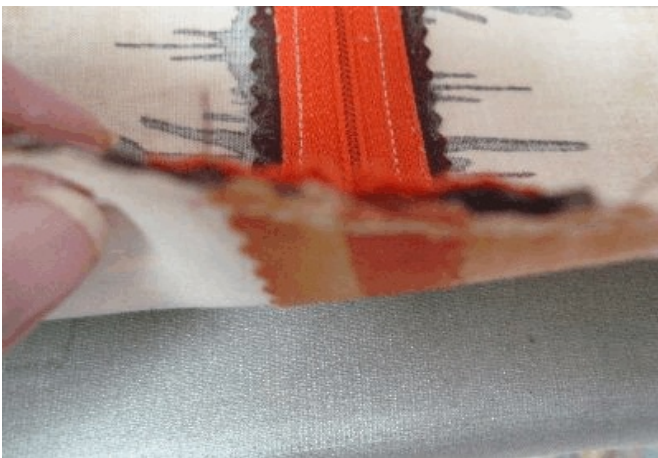
With right sides together, stitch about .5" seam allowance.



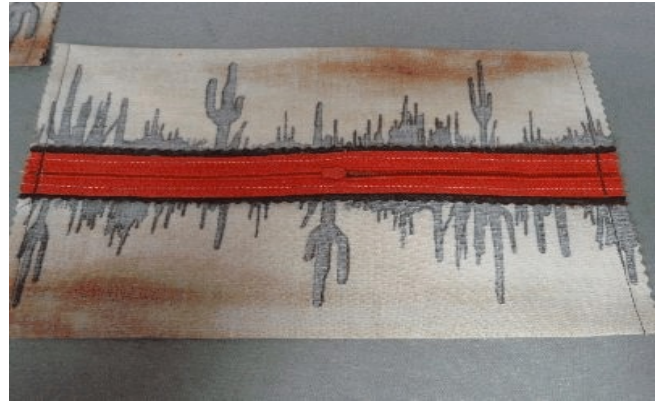
I used a pressing stick to place in between the top and bottom fabric to press the seam open. You could also finger press. You do not want to press a crease in the edge now and you do not want to press onto the zipper. Depending on the type of glue you used, this could set the glue and you will not be able to wash it out.



Match the center of the zipper with the seam and pin along that edge. Do this on both sides. Make sure that you did open the zipper BEFORE you sew those side seams.



Now you've got both side seams sewn. Press a hard crease into both top and bottom folds of your fabric.



At a corner of the bag, line up the crease with the side seam.



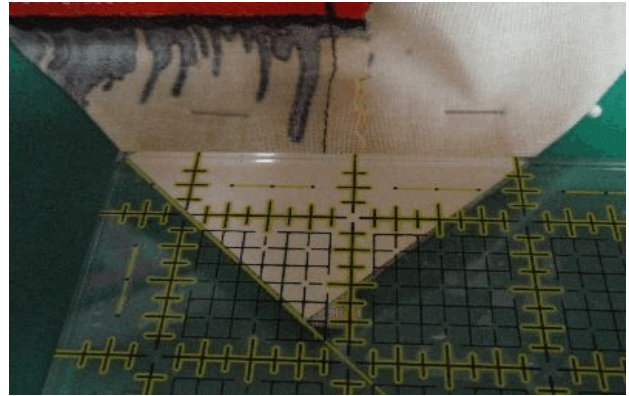
Once you get things fairly close, you can get it in perfect position by making the final adjustment with your fingers by feeling where the crease and seam are meeting.



Once you have lined up your crease with your seam and formed a nice corner, place a couple pins well back from where you will be trimming and sewing.

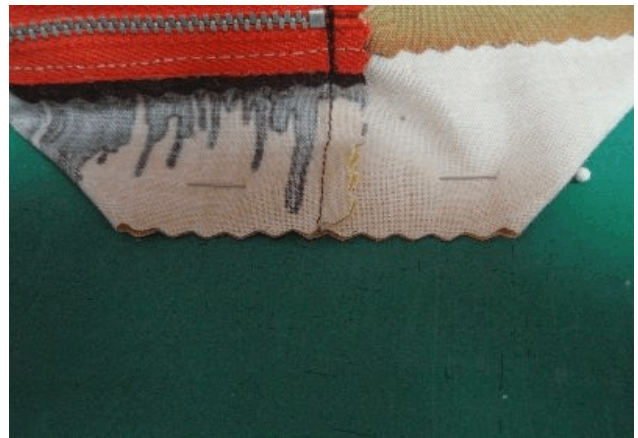
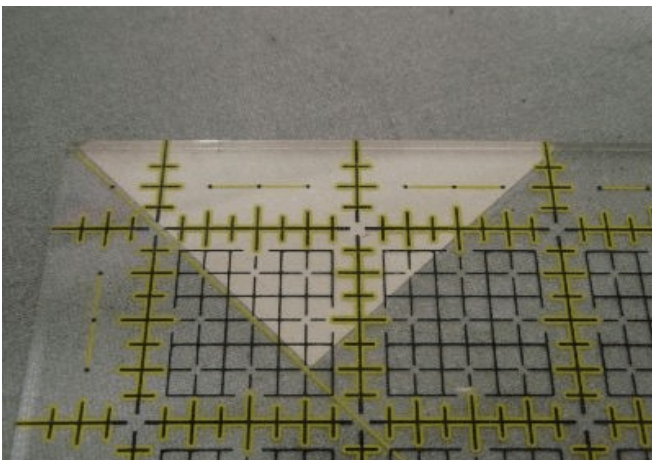


Place your ruler on a corner of your bag lining up both edges and make your cut along the edge of the ruler.



I find it easier to make a template and tape it to the back side of a ruler for doing repetitive cuts that you'd like to be equal. I used a small ruler with a diagonal line to make it easier to line everything up. How much you cut off is entirely up to you, You can pinch two corners of your bag until you find the right amount. As you can see, mine is about 2.5" across the cut area.

One corner of the bag that has been cut.



This is the unfolded corner that you just cut off. If the edges are even, you got it perfect. To be a tiny bit off will not matter. If you are very much off, your bag will not square up right.



Now all four corners are sewn and you can see how the metal zipper was cut off. Turn the bag right side out.



Top of the bag.



The bag is folded and DONE!!!

Here are the two completed bags. You can put tiny ribbons in the zipper tabs to make cute pulls.

